

YOUR *dream* HOME



EXPERIENCE & INNOVATION

Saber nasce a Viadana (MN) nel 1975 come azienda a conduzione familiare, inizialmente dedicata solo alla produzione e commercializzazione di materiali vernicianti per il settore edilizia.

Successivamente si rivolge al settore industriale proponendo una gamma di articoli che spazia dalla antiruggine e smalti sintetici, fino ai più tecnologici prodotti bicomponenti a base epossidica e poliuretana.

Con grande soddisfazione, la nostra società è cresciuta, occupando una superficie totale di 9.000 m² ed incrementando l'organico in ogni settore dello stabilimento.

La ricerca continua di nuovi materiali, soluzioni innovative e la collaborazione con le primarie aziende hanno contribuito ad arricchire ulteriormente la gamma dei nostri articoli.

Attualmente stiamo sperimentando nuovi materiali vernicianti ecologici conformi alle normative specifiche nell'ambito della bioedilizia.

Da oltre 30 anni la nostra azienda continua con costanza e determinazione, la strada iniziata, orgogliosi di aver mantenuto immutate nel tempo le peculiarità che caratterizzano le aziende a gestione familiare: celerità nell'evasione degli ordini, versatilità e particolare attenzione verso i clienti.





MADE IN ITALY PRODUCTION

Gli impianti di ultimissima generazione garantiscono una produzione veloce ed attenta alle esigenze del consumatore.





IN ALL OVER THE WORLD

Grazie ad una innovativa tecnologia Saber offre una vasta gamma di prodotti riuscendo a soddisfare le esigenze di privati e professionisti, in tutto il mondo.



Yearly liters
production capacity



Customers served



Average customers
retention years





ALICANTE 6
SEYCHELLES 7
MALDIVE 9
CRYSTAL 10
METALLIKA 12
ACQUAMETAL 13
SETA 14
COMETE NEW 16
TEMPESTA DI NEVE 17
BACK TO SCHOOL 18
SENSITIVE 19
FERRUM 20
MIRAGE ORO PALLIDO 21

INDEX

22 KROMO
23 KROMO SABBBIATO
24 STUCCO ANTICO
26 STUCCO MANTOVANO
27 TINTORETTO A SPATOLA
28 MARMORINO DI GONZAGA
30 TRAVERTINO
31 SESTOSENSE
32 LOGOS
33 CERE DI POMPEI
34 SETA FLORENTIA
35 MAXIPEARL

Basi



55 Base Oro



56 Base Bronzo



57 Base Rame



32 Base Oro Light



59 Base Perla

Tinte



31 Alicante



32 Alicante



33 Alicante



34 Alicante



35 Alicante



36 Alicante



37 Alicante



38 Alicante



39 Alicante



40 Alicante



41 Alicante



42 Alicante



43 Alicante



44 Alicante



45 Alicante



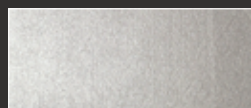
46 Alicante



47 Alicante



48 Alicante



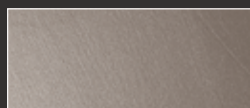
49 Alicante



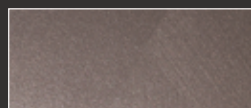
50 Alicante



51 Alicante



52 Alicante



53 Alicante



54 Alicante

Alicante



Application: spalter
Medium output: for coat 9÷10 m²/l
Dilution: max 3 - 5% with water



IT

A supporto stabilizzato applicare una mano a pennello di fissativo acrilico Special Fixative e quindi una mano a rullo di fondo uniformante Das. A superficie asciutta applicare una mano di Alicante con lo spalter a pennellate brevi e incrociate. Ripassare immediatamente la superficie con lo spalter scarico per togliere il materiale eccedente.

Volendo ottenere un effetto più brillante e più perlescente applicare una seconda mano di Alicante con la stessa tecnica della prima.

EN

Once the surface has been stabilized, apply a brushed coat of acrylic fixative Special Fixative and then a roller painted coat of smooth layer Das. When the surface is dry apply a coat of Alicante with a spalter with short and crossed brush-strokes. Immediately go over again with a discharged spalter in order to take the exceeding product away.

If we want a more brilliant and pearly effect, apply a second coat of Alicante following the previous technique.

Seychelles



Application: spalter
Medium output: for coat 8÷9 m²/l
Dilution: max 3 - 5% with water



IT

A supporto stabilizzato applicare una mano a pennello di fissativo acrilico Special Fixative e quindi una mano a rullo di fondo uniformante Das.

A superficie asciutta applicare con lo spalter una mano di Seychelles con pennellate brevi e incrociate.

Dopo qualche minuto ripassare con lo spalter scarico distribuendo i granelli di sabbia nell'effetto desiderato.

EN

Once the surface has been stabilized, apply a brushed coat of acrylic fixative Special Fixative and then a coat of white levelling Das.

On the dry surface apply a coat of Seychelles with a spalter, giving short and crossed brush-strokes.

Few minutes later, go over again with a discharged spalter spreading the grains of sand according to the wished effect.

Basi



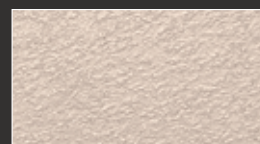
55 Base Oro



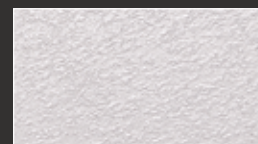
56 Base Bronzo



57 Base Rame



32 Base Oro Light

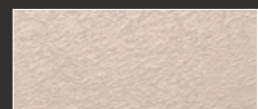


59 Base Perla

Tinte



31 Seychelles



32 Seychelles



33 Seychelles



34 Seychelles



35 Seychelles



36 Seychelles



37 Seychelles



38 Seychelles



39 Seychelles



40 Seychelles



41 Seychelles



42 Seychelles



43 Seychelles



44 Seychelles



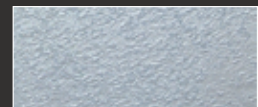
45 Seychelles



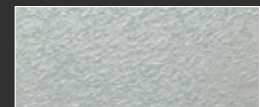
46 Seychelles



47 Seychelles



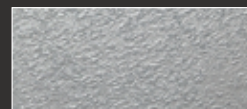
48 Seychelles



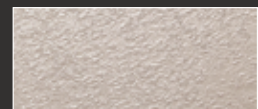
49 Seychelles



50 Seychelles



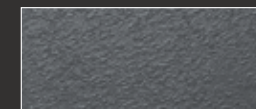
51 Seychelles



52 Seychelles



53 Seychelles



54 Seychelles

Maldive



Application: spalter
Medium output: for coat 7÷9 m²/l
Dilution: max 3 - 5% with water



IT

A supporto stabilizzato applicare una mano a pennello di fissativo acrilico Special Fixative e quindi una mano a rullo di fondo uniformante Das.

A superficie asciutta applicare con lo spalter una mano di Maldive con pennellate brevi e incrociate. Ripassare la superficie con lo spalter scarico lavorando il prodotto in un'unica direzione, ottenendo riflessi di luci e ombre.

EN

Once the surface has been stabilized, apply a brushed coat of acrylic fixative Special Fixative and then a coat of white levelling Das.

On the dry surface apply a coat of Maldive with a spalter, giving short and crossed brush-strokes. Brush the surface again with the exhaust spalter and stretch the product in the same direction, resulting in a shadows and highlights effect.

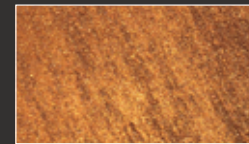




Basi



55 Base Oro



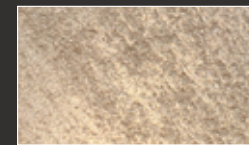
56 Base Bronzo



57 Base Rame



32 Base Oro Light



59 Base Perla

Tinte



31 Maldive



58 Maldive



33 Maldive



34 Maldive



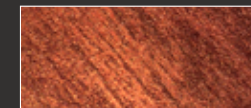
35 Maldive



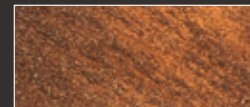
36 Maldive



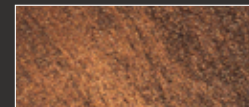
37 Maldive



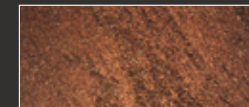
38 Maldive



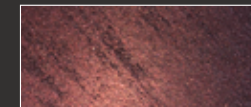
39 Maldive



40 Maldive



41 Maldive



42 Maldive



43 Maldive



44 Maldive



45 Maldive



46 Maldive



47 Maldive



48 Maldive



49 Maldive



50 Maldive



51 Maldive



52 Maldive



53 Maldive



54 Maldive



Crystal



Application: spalter
Medium output: for coat 6÷7 m²/l
Dilution: max 3 - 5% with water



IT

A supporto stabilizzato applicare una mano a pennello di fissativo acrilico Special Fixative e quindi una mano a rullo di fondo uniformante Das.

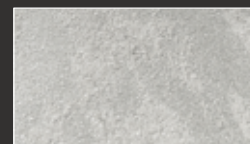
A superficie asciutta applicare con lo spalter una mano di Crystal con pennellate brevi e incrociate. Ripassare la superficie con lo spalter scarico distribuendo i pigmenti perlescenti e le cariche atermiche del prodotto fino ad ottenere l'effetto desiderato.

EN

Once the surface has been stabilized, apply a brushed coat of acrylic fixative Special Fixative and then a coat of white levelling Das.

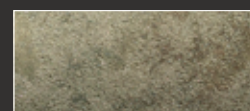
On the dry surface apply a coat of Crystal with a spalter, giving short and crossed brush-strokes. Brush the surface again with the exhaust spalter and spread the product's pearlescent pigments and non-thermal extenders until you get the desired effect.

Base

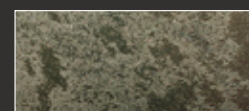


59 Base Perla

Tinte



125 Crystal



127 Crystal



128 Crystal



129 Crystal



132 Crystal



134 Crystal



136 SCrystal



137 Crystal



140 Crystal



141 Crystal



103 Crystal



104 Crystal



102 Crystal



111 Crystal



130 Crystal



91 Crystal



95 Crystal



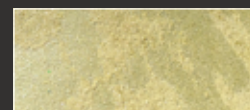
162 Crystal



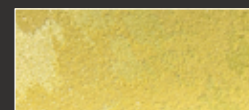
164 Crystal



75 Crystal



60 Crystal



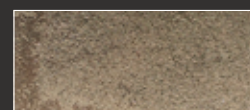
61 Crystal



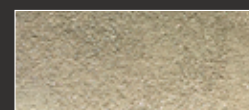
67 Crystal



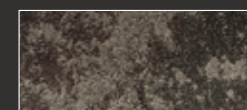
71 Crystal



142 Crystal



106 Crystal



146 Crystal

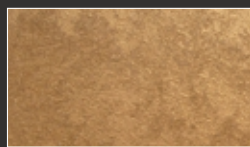


148 Crystal

Basi



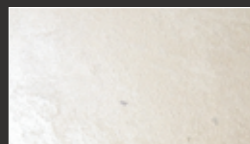
55 Base Oro



56 Base Bronzo



57 Base Rame

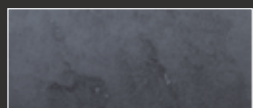


59 Base Perla

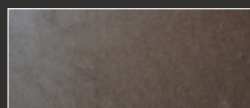


139 Base Oro Light

Tinte



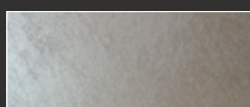
31 Metallika



32 Metallika



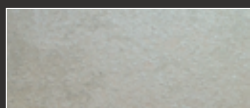
33 Metallika



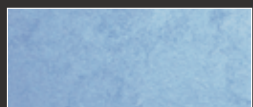
34 Metallika



35 Metallika



36 Metallika



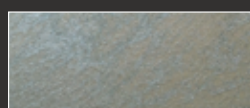
37 Metallika



38 Metallika



39 Metallika



40 Metallika

Metallika



Application: spalter - roll - plastic spatula
Medium output: for two coat 9÷10 m²/l
Dilution: max 3 - 5% with water



IT

A supporto stabilizzato applicare una mano a pennello di fissativo acrilico Special Fixative e quindi una mano a rullo di fondo uniformante Das.

A superficie asciutta applicare una mano di Metallika con lo spalter a pennellate brevi e incrociate.

A prodotto asciutto applicare una seconda mano con la stessa tecnica della prima. Mentre il prodotto appassisce talosciarlo con una taloscia in plastica.

EN

Once the surface has been stabilized, apply a brushed coat of acrylic fixative Special Fixative and then a roller painted coat of white levelling Das.

On dry surface apply a coat of Metallika with a spalter with short crossed brush-strokes.

Once dry, apply a second coat following the previous technique. While the process is ending, pass over the paint with plastic trowel.

Acquametal



Application: spalter - roll
 Medium output: for two coat 8÷9 m²/l
 Dilution: max 5 - 10% with water



IT

A supporto stabilizzato applicare una mano a pennello di fissativo acrilico Special Fixative e quindi una mano a rullo di fondo uniformante bianco Das.

A superficie asciutta applicare una mano di Acquametal con rullo fioccato.

Applicare una seconda mano di Acquametal con rullo fioccato, badando di rullare sempre dall'alto verso il basso o viceversa.

EN

Once the surface has been stabilized, apply a brushed coat of acrylic fixative Special Fixative and then a roller painted coat of white levelling Das.

On dry surface, apply a coat of Acquametal with flocked roller.

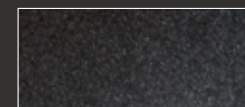
Once dry, apply a second coat of Acquametal with flocked roller, always rolling from the top to the bottom or vice versa.

Base



38 Base

Tinte



31 Acquametal



32 Acquametal



33 Acquametal



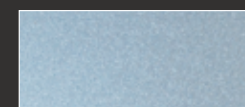
34 Acquametal



35 Acquametal



36 Acquametal



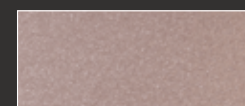
37 Acquametal



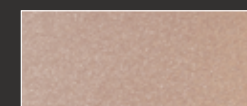
39 Acquametal



40 Acquametal



41 Acquametal



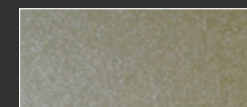
42 Acquametal



43 Acquametal



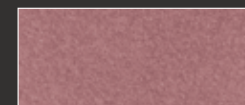
44 Acquametal



45 Acquametal



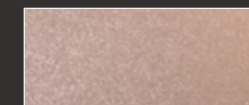
46 Acquametal



48 Acquametal



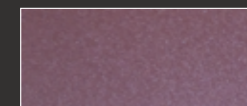
49 Acquametal



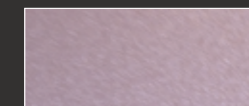
50 Acquametal



51 Acquametal



52 Acquametal



53 Acquametal



Seta



Application: spalter - roll
Medium output: for coat 9÷10 m²/l
Dilution: max 3 - 5% with water



IT

A supporto stabilizzato applicare una mano a pennello di fissativo acrilico Special Fixative e quindi una mano a rullo di fondo uniformante Das.

A supporto perfettamente preparato applicare una mano di Seta con rullo a pelo raso o spalter ripassando con taloscia in plastica per ottenere l'effetto desiderato. A supporto asciutto applicare una seconda mano di Seta procedendo come per la prima mano. Per ottenere un effetto migliore usare la taloscia con piccoli movimenti rotatori.

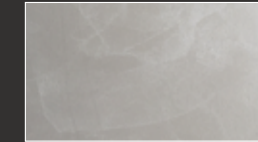
EN

Once the surface has been stabilized, apply a brushed coat of acrylic fixative Special Fixative and then a coat of white levelling Das.

On prepared support, apply a coat of Seta with smooth roller or spalter and pass over the surface with plastic trowel to obtain the desired effect.

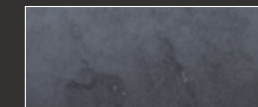
Once dry surface, apply a second coat of Seta following the previous technique. To obtain a better effect pass plastic trowel with small circular movement.

Basi

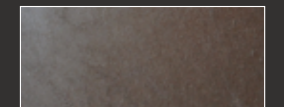


59 Base Perla

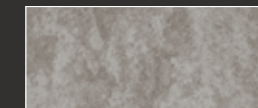
Tinte



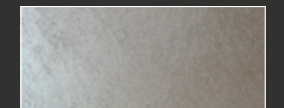
31 Seta



32 Seta



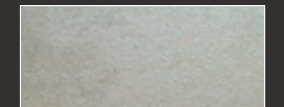
33 Seta



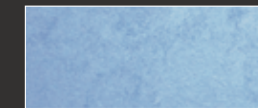
34 Seta



35 Seta



36 Seta



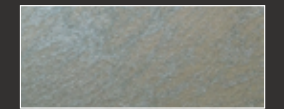
37 Seta



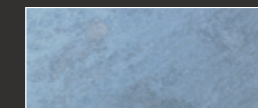
38 Seta



39 Seta



40 Seta



41 Seta



42 Seta

Tinte



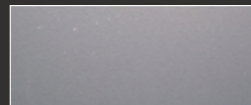
31 Comete



32 Comete



33 Comete



34 Comete



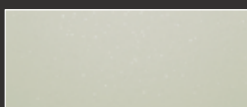
35 Comete



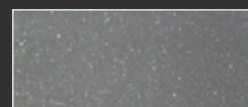
36 Comete



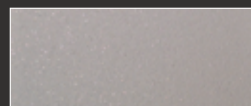
37 Comete



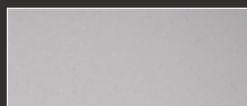
38 Comete



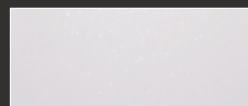
39 Comete



40 Comete



41 Comete



42 Comete



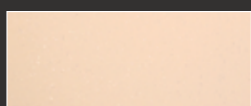
43 Comete



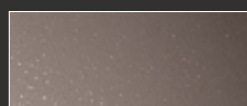
44 Comete



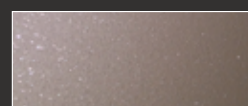
45 Comete



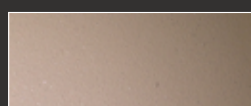
46 Comete



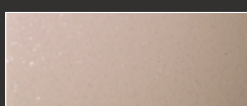
47 Comete



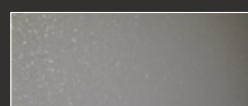
48 Comete



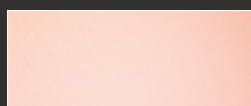
49 Comete



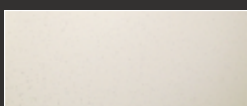
50 Comete



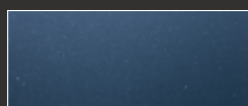
51 Comete



52 Comete



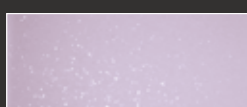
53 Comete



54 Comete



55 Comete



56 Comete



57 Comete

Comete New



Application: spalter - roll
Medium output: for two coat 7÷8 m²/l
Dilution: max 3 - 5% with water



IT

A supporto stabilizzato applicare una mano a pennello di fissativo acrilico Special Fixative e quindi una o due mani a rullo di fondo uniformante bianco o neutro Das nella tinta desiderata.

A superficie asciutta applicare una mano di Comete New con lo spalter a pennellate brevi ed incrociate. Volendo ottenere una maggiore concentrazione di cristalli, a distanza di 3 - 4 ore applicare una seconda mano di Comete New.

EN

Once the surface stabilized, apply a coat of acrylic fixative Special Fixative with a brush and then one or two coats of white or neutral levelling Das according to the wished colour, with a roll.

When dry, apply a coat of Comete New with a spalter using short and cross strokes. If a final brighter effect is desired, in order to increase the crystals concentration on the surface, apply a second coat of Comete New after 3 - 4 hours.

Tempesta di neve



Application: spalter - roll
Medium output: for coat 6÷7 m²/l
Dilution: max 3% with water



IT

A supporto stabilizzato applicare una mano a pennello di fissativo acrilico Special Fixative e quindi una o due mani a rullo di fondo uniformante bianco o colorato Das nella tinta desiderata.

A superficie asciutta applicare una mano di Tempesta di neve con lo spalter a pennellate brevi, incrociate e disordinate.

EN

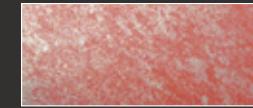
Once the surface stabilized, apply a coat of acrylic fixative Special Fixative with a brush and then one or two coats of white or coloured levelling Das according to the wished colour, with a roll.

On the dry surface, apply a coat of Tempesta di neve with a spalter, giving short crossed and irregular brush-strokes.

Tinte



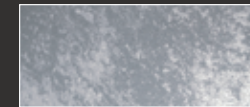
31 Tempesta di neve



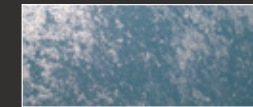
32 Tempesta di neve



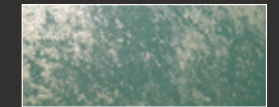
33 Tempesta di neve



34 Tempesta di neve



35 Tempesta di neve



36 Tempesta di neve



37 Tempesta di neve



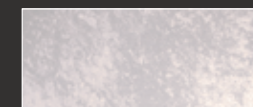
38 Tempesta di neve



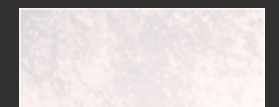
39 Tempesta di neve



40 Tempesta di neve



41 Tempesta di neve



42 Tempesta di neve



43 Tempesta di neve



44 Tempesta di neve



45 Tempesta di neve



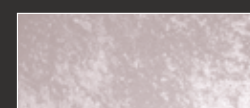
46 Tempesta di neve



47 Tempesta di neve



48 Tempesta di neve



49 Tempesta di neve



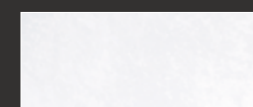
50 Tempesta di neve



51 Tempesta di neve



52 Tempesta di neve



53 Tempesta di neve



54 Tempesta di neve



55 Tempesta di neve



56 Tempesta di neve



57 Tempesta di neve

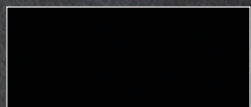
Back to School

PITTURA LAVAGNA

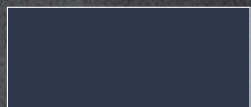


Application: roll
Medium output: for two coat 2 m²/l (pack 250 ml)
Dilution: max 3 - 5% with water

Tinte



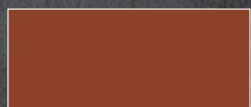
Nero



Blu



Verde



Rosso



Bianco



IT

A supporto stabilizzato applicare una mano a pennello di fissativo acrilico Special Fixative.

A supporto perfettamente preparato applicare una mano di Back to School con rullo a pelo corto distribuendo uniformemente il prodotto sulla superficie evitando di lasciare buccia. Dopo 4 - 5 ore e comunque a superficie perfettamente asciutta applicare la seconda mano di Back to School con la stessa tecnica della prima.

EN

Once the surface has been stabilized, apply a brushed coat of acrylic fixative Special Fixative.

On prepared support apply a coat of Back to School with smooth short roller distributing uniformly the product on the surface avoiding the peel.

After 4 - 5 hours or with perfectly dried surface apply a second coat of Back to School following the previous technique.

Sensitive



Application: spalter - spatula
Medium output: for coat 6÷7 m²/l
Dilution: ready to use



IT

A supporto stabilizzato applicare una mano a pennello di fissativo acrilico Special Fixative e quindi una mano a rullo di fondo uniformante bianco Das. A superficie asciutta applicare una mano di Ferrum con lo spalter a pennellate brevi ed incrociate.

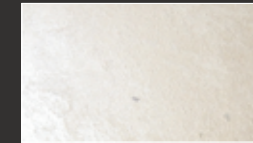
Volendo creare disegni o effetti particolari ripassare immediatamente con lo spalter scarico distribuendo il prodotto secondo l'effetto desiderato.

EN

Once the surface has been stabilized, apply a brushed coat of acrylic fixative Special Fixative and then a roller painted coat of white levelling Das. On dry surface, apply a coat of Ferrum with a spalter with short and crossed brush-strokes.

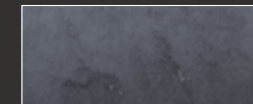
If we want to create particular patterns or effects, immediatly go over again with a discharged spalter spreading the paint as the wished effect.

Base

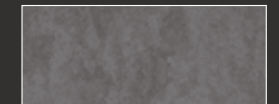


59 Base Perla

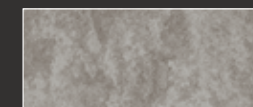
Tinte



31 Sensitive



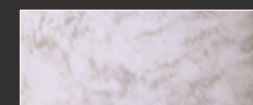
32 Sensitive



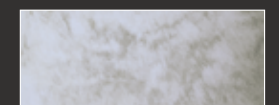
33 Sensitive



34 Sensitive



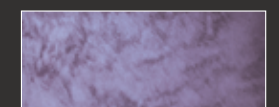
35 Sensitive



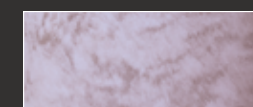
36 Sensitive



37 Sensitive



38 Sensitive



39 Sensitive



40 Sensitive

Ferrum



Application: spalter
Medium output: for coat 7÷8 m²/l
Dilution: max 3 - 5% with water

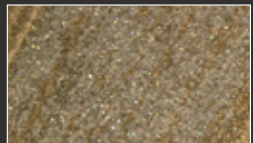
Basi



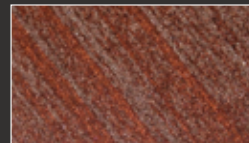
31 Base Bronzo



32 Base Argento



33 Base Oro



34 Base Rame

Tinte



35 Ferrum



36 Ferrum



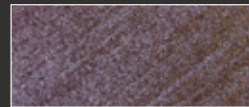
37 Ferrum



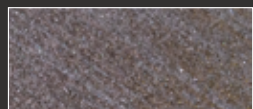
38 Ferrum



39 Ferrum



40 Ferrum



41 Ferrum



42 Ferrum



55 Ferrum



56 Ferrum



57 Ferrum



58 Ferrum



IT

A supporto stabilizzato applicare una mano a pennello di fissativo acrilico Special Fixative e quindi una mano a rullo di fondo uniformante bianco Das. A superficie asciutta applicare una mano di Ferrum con lo spalter a pennellate brevi ed incrociate.

Volendo creare disegni o effetti particolari ripassare immediatamente con lo spalter scarico distribuendo il prodotto secondo l'effetto desiderato.

EN

Once the surface has been stabilized, apply a brushed coat of acrylic fixative Special Fixative and then a roller painted coat of white levelling Das. On dry surface, apply a coat of Ferrum with a spalter with short and crossed brush-strokes.

If we want to create particular patterns or effects, immediatly go over again with a discharged spalter spreading the paint as the wished effect.

Mirage Oro Pallido



Application: spalter
Medium output: for coat 6÷7 m²/l
Dilution: ready to use



IT

A supporto stabilizzato applicare una mano a pennello di fissativo acrilico Special Fixative e quindi una mano a rullo di fondo uniformante.

A superficie perfettamente essiccata applicare una prima mano di Mirage Oro Pallido con lo spalter a pennellate brevi e incrociate ripassando immediatamente la superficie con lo spalter scarico. Dopo 3-4 ore e comunque a supporto perfettamente essiccato applicare la seconda mano con la stessa tecnica della prima.

EN

Once the surface is perfectly firm, apply a coat of acrylic primer Special Fixative with brush and then a coat of Fondo Universale Liscio with roller.

On completely dried surface, apply a coat of Mirage oro Pallido with spalter with short and crossed brushstrokes, immediately go over with discharged splatter.

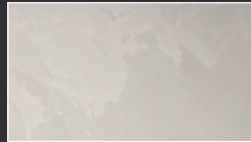
After 3-4 hrs, once the surface is dries, apply the second coat using the same technique.

Kromo



Application: spalter - roll - stainless steel trowel
Medium output: for two coat 6÷7 m²/l
Dilution: depends on the type of application

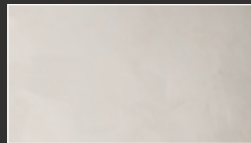
Effetti



Kromo liscio a taloscia

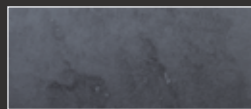


Kromo liscio a rullo

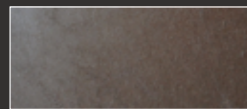


Kromo liscio a pennello

Tinte



31 Kromo



32 Kromo



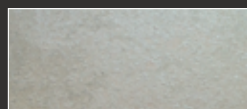
33 Kromo



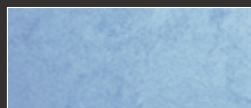
34 Kromo



35 Kromo



36 Kromo



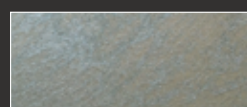
37 Kromo



38 Kromo



39 Kromo



40 Kromo



IT

A supporto stabilizzato applicare una mano a pennello di fissativo acrilico Special Fixative e quindi una mano a rullo di fondo uniformante.

Applicazione a taloscia: applicare una prima mano a rullo di Kromo tal quale, ripassando la superficie con taloscia inox. A prodotto perfettamente essiccato applicare la seconda mano con la stessa tecnica della prima ripassando la superficie con spatolate dal basso in alto e contrario e da destra a sinistra e contrario al fine di ottenere un effetto velluto setoso chiaro/scuro.

Applicazione a rullo: diluire il prodotto col 20-25 % d'acqua sul peso e applicare Kromo con rullo "Kanekaron". Dopo 4-5 ore applicare la seconda mano con la stessa tecnica della prima.

Applicazione a pennello: diluire il prodotto con il 60-70 % di acqua sul peso e applicare Kromo con lo spalter a pennellate brevi ed incrociate evitando sovrapposizioni di prodotto. A prodotto perfettamente essiccato applicare la seconda mano con la stessa tecnica della prima.

EN

Once the surface is perfectly firm, apply a coat of acrylic primer Special Fixative with brush and then a coat of Fondo Universale Liscio with roller.

Application with trowel: apply a coat of Kromo with roller, and then go over with stainless steel trowel. Once the surface is completely dried, apply the second coat using the same method, go over with spatula from bottom to top and the opposite, from right to left and the opposite, in order to obtain light/dark silky velvet effect.

Application with roller: dilute the product with 20-25% of water on weight and apply kromo with roller "Kanekaron". After 4-5 hrs, apply the second coat using the same method.

Application with brush: dilute the product with 60-70% of water on weight and apply Kromo with spalter creating short and crossed brushstrokes, avoid the overlapping of product. Once it is completely dried, go on with the second coat using the same method.

Kromo Sabbiato



Application: spatula
Medium output: for coat 4÷5 m²/l
Dilution: max 3% with water



IT

A supporto stabilizzato, applicare una mano a pennello di fissativo acrilico Special Fixative e quindi una mano a rullo di fondo uniformante Das.

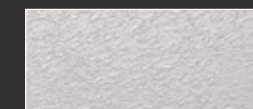
A superficie perfettamente essiccata applicare una mano di Kromo Sabbiato con lo spalter a pennellate brevi ed incrociate. Volendo aumentare l'effetto materico a prodotto asciutto applicare una seconda mano di Kromo Sabbiato con la stessa tecnica della prima.

EN

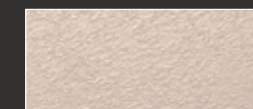
Once the surface is perfectly firm, apply a coat of acrylic primer Special Fixative with brush and then a coat of white primer DAS with roller.

On perfectly dried surface, apply a coat of Kromo sabbiato with spalter creating short and crossed brushstrokes. If desired, to increase the materic effect, on dry surface, apply the second coat of Kromo sabbiato with same method used before.

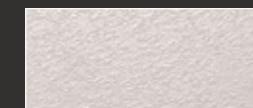
Tinte



31 Kromo Sabbiato



32 Kromo Sabbiato



33 Kromo Sabbiato



34 Kromo Sabbiato



35 Kromo Sabbiato



36 Kromo Sabbiato



37 Kromo Sabbiato



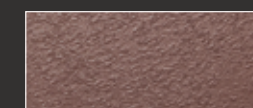
38 Kromo Sabbiato



39 Kromo Sabbiato



40 Kromo Sabbiato



41 Kromo Sabbiato



42 Kromo Sabbiato



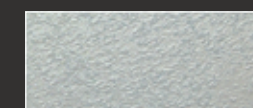
44 Kromo Sabbiato



45 Kromo Sabbiato



48 Kromo Sabbiato



49 Kromo Sabbiato



Stucco Antico



Application: stainless steel trowel
Medium output: for two coat 6÷7 m²/l
Dilution: ready to use



IT

A supporto stabilizzato applicare una mano a pennello di fissativo acrilico Special Fixative e quindi una mano a rullo di fondo uniformante.

A superficie perfettamente essiccata applicare una mano con taloscia inox di Stucco Antico coprendo uniformemente la superficie. A prodotto perfettamente essiccato applicare una seconda mano di Stucco Antico con spatolate più o meno ampie e più o meno disordinate a seconda dell'effetto finale desiderato.

A superficie asciutta ma non secca, lucidare la superficie con la taloscia inox perfettamente pulita.

EN

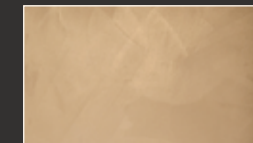
Once the surface is perfectly firm, apply a coat of acrylic primer Special Fixative with brush and then a coat of Fondo Universale Liscio with roller.

On completely dried surface, apply a coat with stainless steel trowel of Stucco antico, covering evenly the surface.

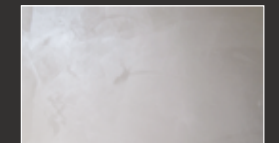
Once it is dried, apply the second coat of stucco antico with wide and more or less messy spatulas depending final on desired effect.

On dried surface, not completely dried, pass over the stainless steel trowel to make the surface shiny.

Base

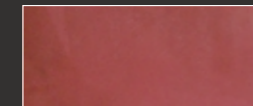


Base Oro

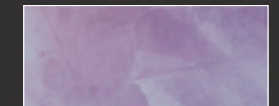


Base Argento

Tinte



31 Stucco Antico



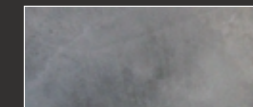
32 Stucco Antico



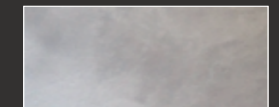
33 Stucco Antico



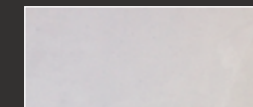
34 Stucco Antico



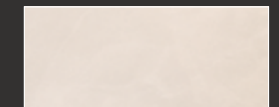
35 Stucco Antico



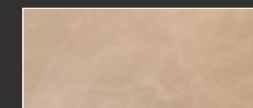
36 Stucco Antico



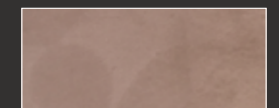
37 Stucco Antico



39 Stucco Antico



40 Stucco Antico



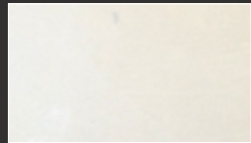
41 Stucco Antico

Stucco Mantovano



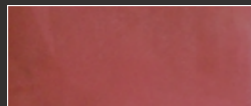
Application: spatula
Medium output: for two coat 6-8 m²/l
Dilution: ready to use

Base



38 Base Perla

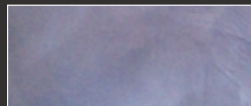
Tinte



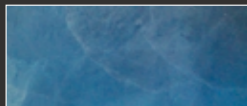
31 Stucco Mantovano



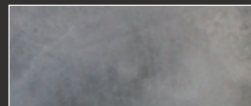
32 Stucco Mantovano



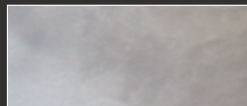
33 Stucco Mantovano



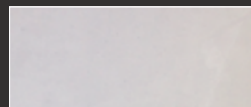
34 Stucco Mantovano



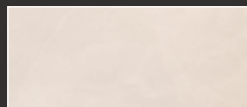
35 Stucco Mantovano



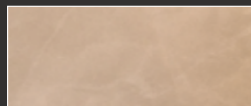
36 Stucco Mantovano



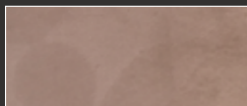
37 Stucco Mantovano



39 Stucco Mantovano



40 Stucco Mantovano



41 Stucco Mantovano



IT

A supporto stabilizzato applicare una mano a pennello di fissativo acrilico Special Fixative e quindi una mano a rullo di fondo uniformante bianco Das.

A superficie asciutta applicare la prima mano di Stucco Mantovano metallizzato con la taloscia in plastica coprendo uniformemente la superficie. A supporto asciutto applicare la seconda mano con spatolate più o meno ampie a seconda dell'effetto estetico desiderato.

EN

Once the surface has been stabilized, apply a brushed coat of acrylic fixative Special Fixative and then a roller painted coat of white levelling Das.

On dry surface apply the first coat of Stucco Mantovano metallizzato with plastic trowel covering the surface evenly. On dry wall apply the second coat with more or less large spatula motions according to the esthetic desired effect.

Tintoretto a spatola New



Application: spatula
Medium output: for two coat 500÷700 gr/m²
Dilution: ready to use



IT

A supporto stabilizzato applicare una mano a pennello di fissativo acrilico Special Fixative e quindi una mano a rullo di fondo uniformante bianco Das.

A superficie asciutta applicare la prima mano di Tintoretto a spatola con taloscia inox coprendo uniformemente la superficie.

A supporto asciutto applicare la seconda mano con spatolate più o meno ampie a seconda dell'effetto estetico desiderato.

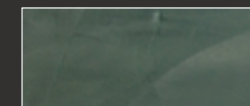
EN

Once the surface has been stabilized, apply a brushed coat of acrylic fixative Special Fixative and then a roller painted coat of white levelling Das.

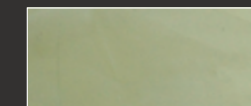
On dry surface apply the first coat of Tintoretto a spatola with stainless trowel, covering the surface evenly.

On dry wall apply the second coat with more or less large spatula motions according to the esthetic desired effect.

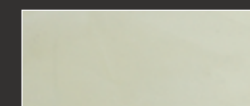
Tinte



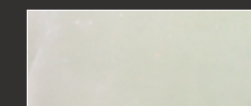
43 Tintoretto a spatola



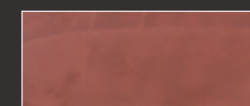
44 Tintoretto a spatola



45 Tintoretto a spatola



46 Tintoretto a spatola



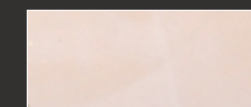
47 Tintoretto a spatola



48 Tintoretto a spatola



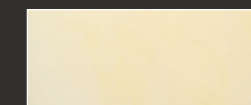
49 Tintoretto a spatola



50 Tintoretto a spatola



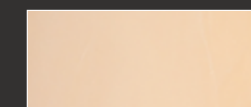
51 Tintoretto a spatola



52 Tintoretto a spatola



53 Tintoretto a spatola



54 Tintoretto a spatola

Marmorino Gonzaga New



Application: stainless steel trowel
Medium output: for two coat 0,8±1 kg/m²
Dilution: ready to use



IT

A supporto stabilizzato applicare una mano a pennello di fissativo acrilico Special Fixative e quindi una mano a rullo di fondo uniformante Das. A superficie asciutta applicare la prima mano di Marmorino con taloscia in acciaio inox coprendo uniformemente il supporto.

A prodotto asciutto applicare la seconda mano e la terza a seguire bagnato su bagnato. A prodotto appassito passare la taloscia pulita per lucidare la superficie.

EN

Once the surface has been stabilized, apply a brushed coat of acrylic fixative Special Fixative and then a roller painted coat of white levelling Das.

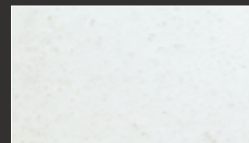
On dry surface, apply the first coat of Marmorino with inox trowel covering the wall evenly.

When the paint is dry, apply the second coat and then the third wet-on-wet. At the end of the process, use a clean smooth trowel to polish the surface.



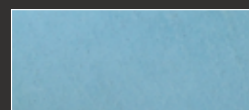


Basi

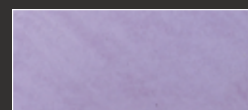


33 Base Bianca

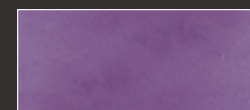
Tinte



31 Marmorino



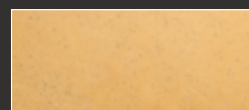
32 Marmorino



34 Marmorino



35 Marmorino



36 Marmorino



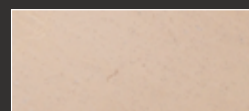
37 Marmorino



38 Marmorino



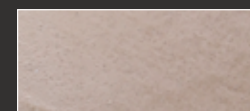
39 Marmorino



40 Marmorino



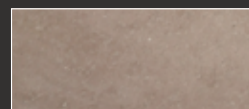
41 Marmorino



42 Marmorino



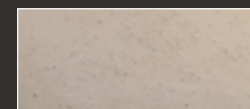
43 Marmorino



44 Marmorino



45 Marmorino



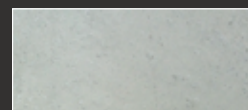
46 Marmorino



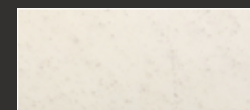
47 Marmorino



48 Marmorino



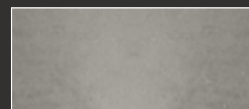
49 Marmorino



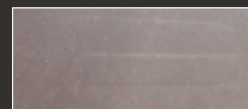
50 Marmorino



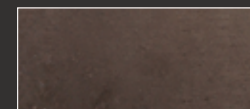
54 Marmorino



55 Marmorino



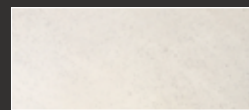
56 Marmorino



57 Marmorino



58 Marmorino



59 Marmorino

Travertino



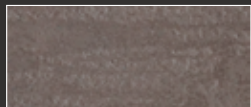
Application: stainless steel trowel
Medium output: for two coat 1÷1,3 kg/m²
Dilution: ready to use

Base



33 Base Bianca

Tinte



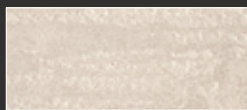
43 Travertino



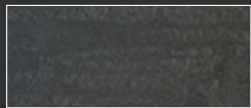
44 Travertino



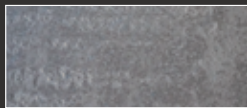
45 Travertino



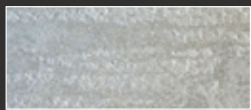
46 Travertino



47 Travertino



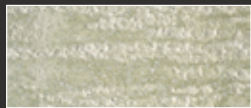
48 Travertino



49 Travertino



50 Travertino



51 Cera Royal* su Travertino



IT

A supporto stabilizzato applicare una mano a pennello di fissativo acrilico Special Fixative e quindi una mano a rullo di fondo uniformante Das. A superficie asciutta applicare la prima mano di Travertino con taloscia in acciaio inox coprendo uniformemente la superficie.

A prodotto asciutto applicare la seconda mano di Travertino passando sulla superficie l'apposito frattazzo e creando la classica rigatura.

Attendere che il prodotto appassisca quindi passare sulla superficie la taloscia inox compattando il prodotto e mettendo in evidenza le cavità.

EN

Once the surface has been stabilized, apply a brushed coat of acrylic fixative Special Fixative and then a roller painted coat of white levelling Das. On dry surface apply the first coat of Travertino with stainless trowel covering the surface evenly.

Once dry apply a second coat of Travertino pass over the surface with special trowel in order to obtain a classical lining effect.

While the process is ending, pass over the surface with inox trowel to consolidate the product and to highlight the cavities.



Application: stainless steel trowel
 Medium output for two coat:
 Sestosenso 1,2÷1,5 kg/m² • Materia 1,3÷1,7 kg/m²
 Diluizione: ready to use



IT

A supporto stabilizzato applicare una mano a pennello di fissativo acrilico Special Fixative e quindi una mano a rullo di fondo uniformante Das.

A superficie asciutta applicare la prima mano ad elevato spessore di Materia o Sestosenso con la spatola in acciaio inox coprendo uniformemente il supporto.

A prodotto asciutto applicare la seconda mano e la terza a seguire, bagnato su bagnato.

A prodotto appassito passare la taloscia pulita per lucidare la superficie.

EN

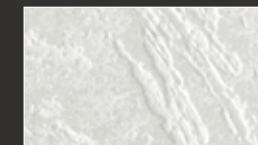
Once the surface has been stabilized, apply a brushed coat of acrylic fixative Special Fixative and then a roller painted coat of white levelling Das.

On dry surface apply the first coat of Materia or Sestosenso with high thickness using a stainless steel spatula, covering the primed wall evenly and entirely.

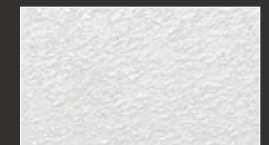
Once dry, apply the second then the third coats, wet-on-wet.

At the end of the process, use a clean smooth trowel to polish the surface.

Basi

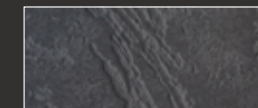


33 Sestosenso base bianca



33 Materia base bianca

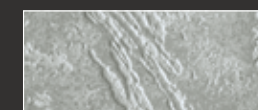
Tinte



47 Sestosenso



48 Sestosenso



49 Sestosenso



50 Sestosenso



Base

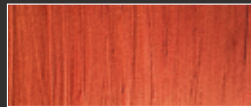


Base Bianca

Tinte su Logos



Alicante Oro



Alicante Rame



Ferrum Bronzo



Ferrum Oro



IT

A supporto stabilizzato spazzolare la superficie e applicare una mano a pennello di fissativo acrilico Special Fixative. A supporto asciutto, applicare una mano di fondo uniforme Das.

A supporto pronto, applicare una mano a rullo, pennello o spatola di Logos uniformando lo spessore del materiale applicato ritornando poi sulla superficie con l'attrezzo idoneo ad ottenere l'effetto desiderato. A prodotto essiccato procedere all'applicazione della decorazione desiderata.

EN

Once the surface has been stabilized, apply a brushed coat of acrylic fixative Special Fixative. On dry surface, apply a coat of white levelling Das.

On dry surface, apply with smooth roller, brush or plastic trowel a layer of Logos to levelling support and pass over the surface with suitable tool until you get the desired effect.

On dry surface, proceed with application of desired decorative.

Cere di Pompei



Application: spalter - spatula
 Medium output: for coat 10÷15 m²/l
 Dilution: max 3% with water



IT

A supporto stabilizzato applicare una mano a pennello di fissativo acrilico Special Fixative e quindi una mano a rullo di fondo liscio Mizar o di fondo uniformante Das oppure Texture bianco o colorato a seconda dell'effetto desiderato. Quando i fondi sono perfettamente asciutti, applicare Cere di Pompei con l'attrezzo prescelto, stendendola accuratamente sulla superficie.

Cere di Pompei è ideale per essere applicato su Marmorino, Travertino, Antiquus a pennello o spugna al fine di ottenere effetti cromatici di elevato pregio.

EN

Once the surface has been stabilized, apply a brushed coat of acrylic fixative Special Fixative and then a roller painted coat of smooth layer Mizar or levelling layer Das, or white or coloured Texture according to the desired effect. On perfectly dry support, apply a coat of Cere di Pompei with the select tool, carefully spreading on the surface.

Cere di Pompei can be easily applied on Marmorino, Travertino and Antiquus with brush or sponge in order to obtain chromatic effect of high quality.

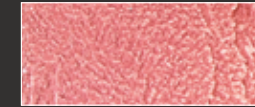
Cere di Pompei su Antiquus



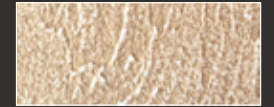
43 Cera Perla



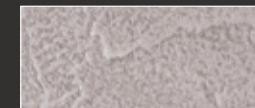
44 Cera Oro



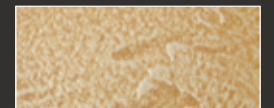
45 Cera Rame



46 Cera Bronzo



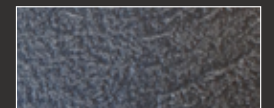
47 Cera Argento



48 Cera Oro Pallido



49 Cera Verderame

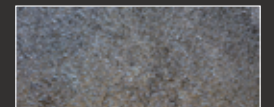


50 Cera Antracite

Cere di Pompei su Texture Nero



Mix di Cere



Mix di Cere

Cere di Pompei su Marmorino

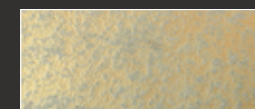


Mix di Cere



Cera Perla

Cere di Pompei su Materia



Cera Oro

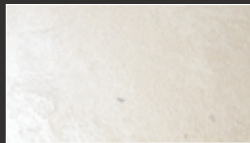
Seta Florentia



Application: spalter - stainless steel trowel
Medium output: for coat 8÷9 m²/l
Dilution: max 3 - 5% with water

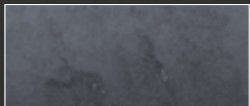


Base

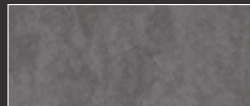


59 Base Perla

Tinte



31 Seta Florentia



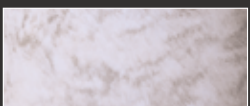
32 Seta Florentia



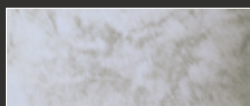
33 Seta Florentia



34 Seta Florentia



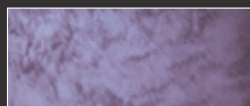
35 Seta Florentia



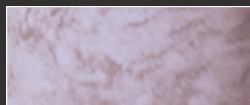
36 Seta Florentia



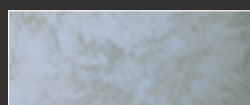
37 Seta Florentia



38 Seta Florentia



39 Seta Florentia



40 Seta Florentia

IT

A supporto stabilizzato, applicare una mano a pennello di fissativo acrilico Special Fixative e quindi una mano a rullo di fondo uniformante.

Applicazione a spalter: a superficie essiccata applicare una mano di Seta Florentia con lo spalter a pennellate brevi e incrociate. Ripassare la superficie con lo spalter scarico fino ad ottenere l'effetto desiderato.

Applicazione a taloscia: a superficie essiccata applicare la prima mano di Seta Florentia con taloscia inox. A superficie asciutta applicare la seconda mano di Seta Florentia con taloscia inox con spatolate brevi o ampie a seconda dell'effetto desiderato.

EN

Once the surface is perfectly firm, apply a coat of acrylic primer Special Fixative with brush and then a coat of Fondo Universale Liscio with roller.

Application with spalter: On dried surface, apply a coat of Seta Florentia with spalter with short and crossed brushstrokes. Repeat it again with splatter with-out paint until you obtain the desired effect.

Application with trowel: On dried surface, apply a coat of Seta Florentia with stainless steel trowel. Once the surface is dried, apply the second coat of Seta Florentia with stainless trowel with short or wide brushstrokes depending on the desired effect.

Maxipearl



Application: spalter
Medium output: for coat 6÷7 m²/l
Dilution: max 3 - 5% with water



IT

A supporto stabilizzato, applicare una mano a pennello di fissativo acrilico Special Fixative e quindi una mano a rullo di fondo uniformante.
A superficie perfettamente essiccata, applicare una mano di Maxipearl con lo spalter, lasciando uno spessore abbastanza abbondante di prodotto sulla superficie e distribuendolo uniformemente.

Ripassare il prodotto con lo stesso spalter per creare un disegno a pennellate incrociate o con un tool tipo zerbino o cocodrillo o Kasbah o con tampone a seconda dell'effetto materico desiderato.

Maxipearl Bronzo Interferente: a superficie perfettamente essiccata, applicare una mano di Logos con lo spalter o la taloscia inox a seconda dell'effetto finale desiderato. Ripassare la superficie con lo spalter per creare l'effetto desiderato. A superficie asciutta applicare a pennello o spugna marina o taloscia in plastica Maxipearl Bronzo Interferente lasciando che il prodotto riempi tutte le parti incise e scoperte le parti in rilievo.

Volendo ottenere un disegno più saturo applicare una seconda mano di Maxipearl Bronzo Interferente con la stessa tecnica della prima.

EN

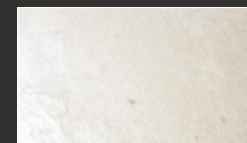
Once the surface is perfectly firm, apply a coat of acrylic primer Special Fixative with brush and then a coat of Fondo Universale Liscio with roller.
On completely dried surface, apply a coat of Maxipearl with spalter, leaving the abundant thickness of product on surface and then distribute it evenly.

On wet surface, go over again with the same spalter to create the effect of crossed brushstrokes or with the tool like zerbino or Crocodile skin pattern roller or Kasbah roller or tampone depending on the desired materic effect.

Maxipearl Bronzo Interferente: On completely dried surface, apply a coat of Logos with splatter or stainless steel trowel depending on the final desired effect. Go over again with spalter to create the brushstroke effect or with zerbino tool for striped effect or with Crocodile skin pattern roller or tampone Kasbah etc. On dried surface, apply with brush or sea sponge or with plastic trowel Maxipearl Bronzo Interferente leaving the product filling all the carve parts and uncover the upper parts.

For saturated effect go over again with the second coat of Maxipearl Bronzo Interferente with the same method used before.

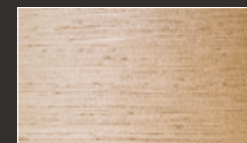
Maxipearl Base ed effetti



59 Base Perla



Maxipearl



Maxipearl



Maxipearl

Maxipearl Bronzo interferente

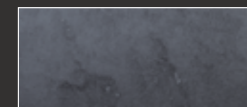


59 Base Perla

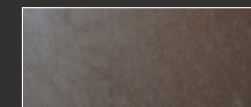


Maxipearl Bronzo su Logos

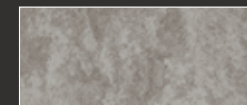
Tinte



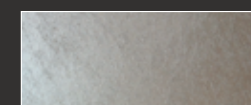
31 Maxipearl



32 Maxipearl



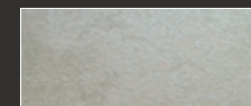
33 Maxipearl



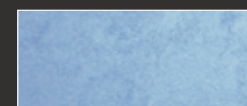
34 Maxipearl



35 Maxipearl



36 Maxipearl



37 Maxipearl



38 Maxipearl



39 Maxipearl



40 Maxipearl

Fondi

DAS

Fondo riempitivo bianco per finiture decorative.

Applicazione: a pennello o rullo
Resa media: 10÷12 m²/l a una mano
Diluizione: 25 - 30% H₂O

FONDO PER STUCCO VENEZIANO

Cera protettiva all'acqua neutra.

Applicazione: taloscia, spatola inox
Resa media: 7÷8 m²/l a una mano
Diluizione: Pronto all'uso

MIZAR

Fondo riempitivo bianco per finiture decorative.

Applicazione: a pennello o rullo
Resa media: 6÷7 m²/l
Diluizione: 25 - 30% H₂O

TEXTURE GRANA FINE

Pittura riempitiva bianca o colorata mascherante a base di resine acriliche e farina di quarzo.

Applicazione: a pennello, rullo o spruzzo
Resa media: 6÷7 m²/l
Diluizione: 20 - 25% H₂O

TEXTURE GRANA GROSSA

Pittura riempitiva bianca o colorata mascherante a base di resine acriliche e farina di quarzo.

Applicazione: a pennello, rullo o spruzzo
Resa media: 5÷6 m²/l
Diluizione: 20 - 25% H₂O

Fissativi

SPECIAL FIXATIVE

Primer incolore all'acqua consolidante ad altissima penetrazione.

Applicazione: a pennello o rullo
Resa media: 10 m²/l
Diluizione: 0 - 30% H₂O

ISOLANTE ACRILICO

Primer incolore all'acqua consolidante ad alta penetrazione.

Applicazione: a pennello o rullo
Resa media: 14÷16 m²/l
Diluizione: 1 - 5% H₂O

Finiture

CERA ROYAL

Cera protettiva all'acqua neutra.

Applicazione: a pennello, spatola o spugna
Resa media: 10÷15 m²/l
Diluizione: 3% H₂O

VELOXAN

Velatura silossanica, neutra o colorata.

Applicazione: a pennello o spugna
Resa media: 10÷20 m²/l
Diluizione: 50 - 60% H₂O

Coloranti

TIPOLOGIA

PACK

P.U. Bianco EWH1	2 Litri
P.U. Giallo ossido EXY1	2 Litri
P.U. Giallo BV EYE 3	2 Litri
P.U. Arancio interni EOR1	2 Litri
P.U. Giallo organico EYE1	2 Litri
P.U. Rosso Ossido EXR1	2 Litri
P.U. Viola EVL1	2 Litri
P.U. Rosso 168 ERE2	2 Litri
P.U. Rosso 254 interni ERE1	2 Litri
P.U. Magenta EMA1	2 Litri
P.U. Blu Ftalo EBL1	2 Litri
P.U. Blu Cobalto EBL3	2 Litri
P.U. Verde Ossido EXG1	2 Litri
P.U. Verde Ftalo EGR1	2 Litri
P.U. Nero Profondo EBK1	2 Litri
P.U. Nero Ossido EBK2	2 Litri